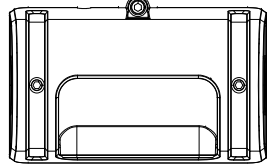
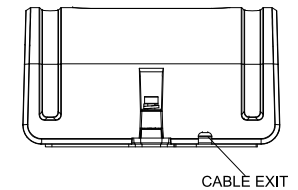
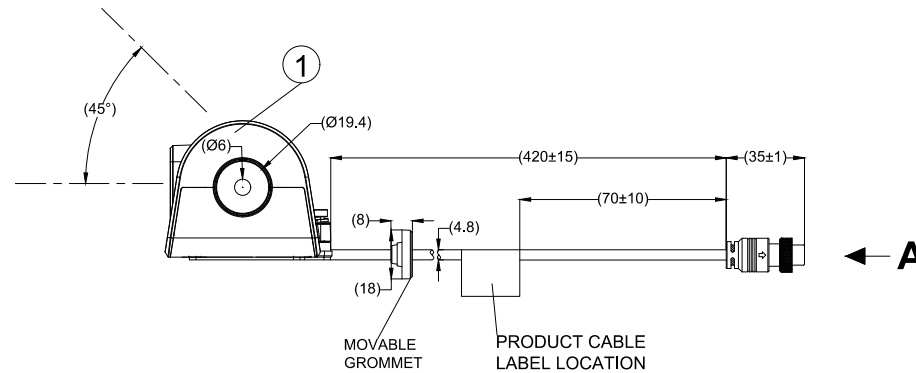
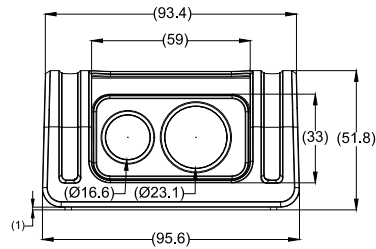
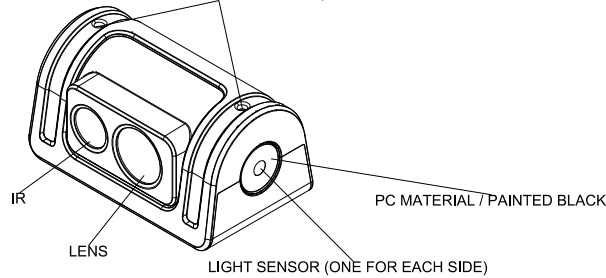


Revision Notes.				
R1 -				
APA: -	Drawn:-	Checked:-	Approved:-	Date: -

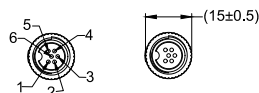
M3 HEX SCREW FOR FIXING BOTTOM BRACKET



M3 HEX SOCKET CAP SCREW (FOR ADJUSTING CAMERA ANGLE)



VIEW A

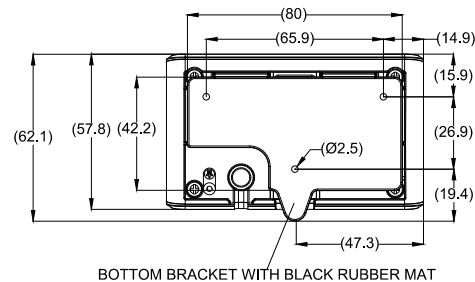


6 PIN FEMALE MATING FACE

PIN #	WIRE COLOUR	DESCRIPTION
1	ORANGE	TX-
2	WHITE	TX+
3	RED	+12V
4	GREEN	RX-
5	YELLOW	RX+
6	BLACK	GND

PART NO	MODEL NO	CAMERA ONLY PART NO	DESCRIPTION
5936	IP-1100C	5961	IP CAMERA - SURFACE-MOUNT, IP67 (1080P)

ITEM	PART NUMBER	MODEL NO	QTY	DESCRIPTION
①	5961	IP-1100C-C	1	IP CAMERA ONLY - SURFACE-MOUNT, IP67 (1080P)
②	5970	IP-1100C-FIX	1	4 X M3 FIXING SCREWS AND 1 X M3 HEX KEY (L SHAPE) (NOT SHOWN)
③	5971	IP-1100C-IG	1	INSTALLATION GUIDE (NOT SHOWN)



- NOTES:
1. MATERIAL: CAST ALUMINUM
 2. REFER TO PRODUCT SPECIFICATION FOR PRODUCT SPECIFICATIONS.
 3. REFER TO COMPONENT DRAWINGS FOR COMPONENT DETAILS.
 4. REFER TO INSTALLATION GUIDE "IP-1100C-IG" FOR CORRECT SETUP, CONFIGURATION AND INSTALLATION.
 5. PURCHASE ORDER TO DEFINE PACKAGING VARIANT.
 6. FIRMWARE VERSION Nx_927C24M_V003_T181206.01_M0000 TO BE PRELOADED TO THE CAMERA DURING MANUFACTURE.

PROPRIETARY NOTICE
THIS DESIGN AND TECHNICAL INFORMATION APPEARING ON THIS DRAWING IS THE PROPERTY OF BRIGADE ELECTRONICS, AND IS DISCLOSED IN CONFIDENCE. IT IS NOT TO BE COPIED, REPRODUCED, REVEALED TO OR EXPROPRIATED BY OTHERS, EITHER IN WHOLE OR IN PART WITHOUT THE EXPRESS WRITTEN CONSENT OF BRIGADE ELECTRONICS.

BRIGADE

Assembly Pl Approval CAROL LI	Approved by L. PILLAY	Checked by J. TYRRELL	Drawn by S.ZHANG
Angle of Projection 	Units mm	Scale N/A	Released 19/12/19
Status RELEASED	IP-1100C		
Part No 5936	BE-004252-00-19		